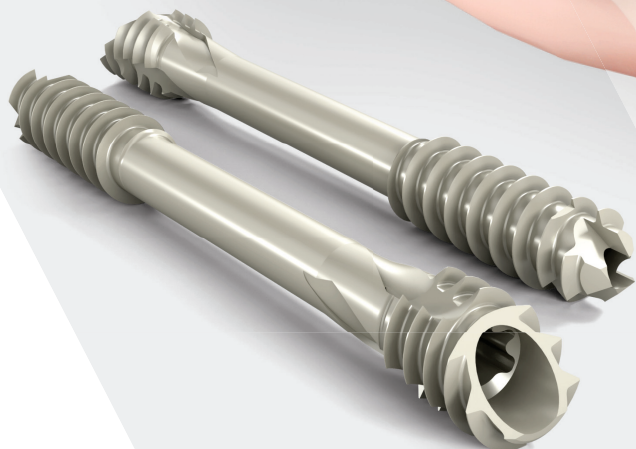


peca-C[®]
Percutaneous Compression

Beveled Headless Compressive Implant



Peca-C Technical Features

Peca® Compressive Implants were designed for the percutaneous fixation in the foot and ankle. The implant is equipped with a beveled head and partially threaded cutting flutes to maximize compression by seating flush with the near cortex, preserving soft tissue structures.

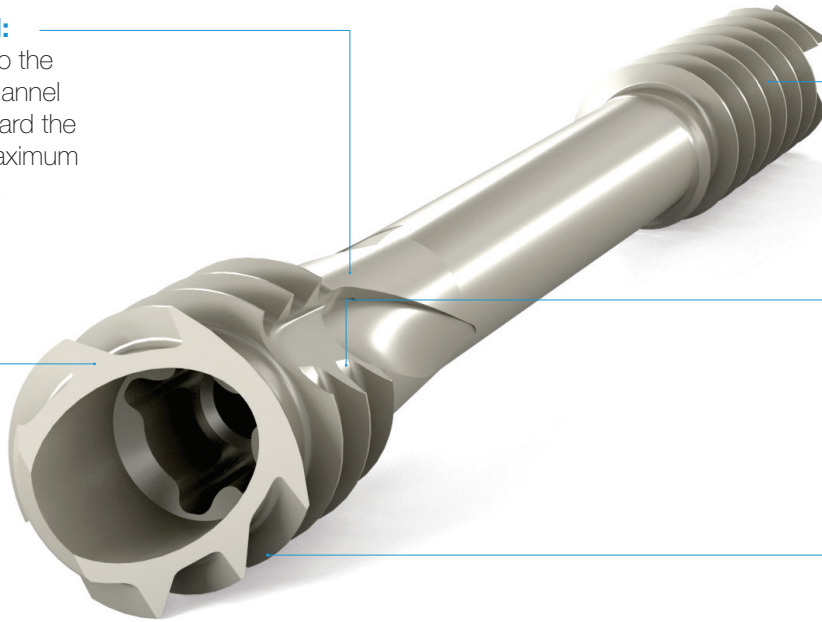
Key Features

Positive-Locking Channel:

As the implant is engaged into the bone the Positive Locking Channel pushes the excess bone toward the cortical surface increasing maximum compression and anchorage.

Beveled head 40°:

Allows the head of the implant to sit flush with the near cortex when seated in the final position.



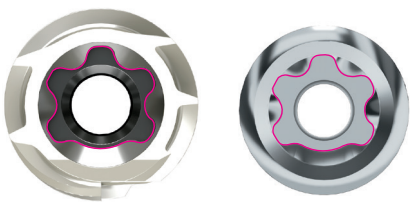
Self drilling & self tapping:
Facilitate insertion

Reverse Cutting Flutes:
Eases the removal of the implant

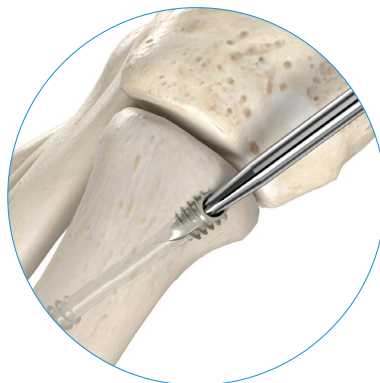
Dual partially threaded:
Optimal compression

Exact-T® recess:

Allows Exact beveled implant head positioning and provides optimal torque. The driver allows an exact positioning of the screwdriver tip in one position only.



Exact-T10 screwdriver



Visual guide



Beveled head:
Cortical anchorage maximization and soft tissues preservation

VS



Standard head:
Compromise between burial of the head and cortical anchorage



PECA® Compressive implants are available in diameter 4mm and in lengths of 18 to 60mm (with 2mm increments up to 50mm, then 5mm increments).

Percutaneous | Compressive | Versatile

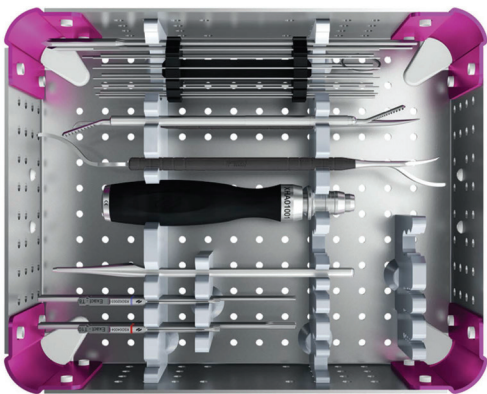
Peca-Compressive Implants can be used for the percutaneous fixation of fresh fractures and arthrodesis in the foot and ankle. Peca-C can be used in combination with the Airlock & Presslock Plating Systems for procedures requiring the rigidity of a plate and screw construct.



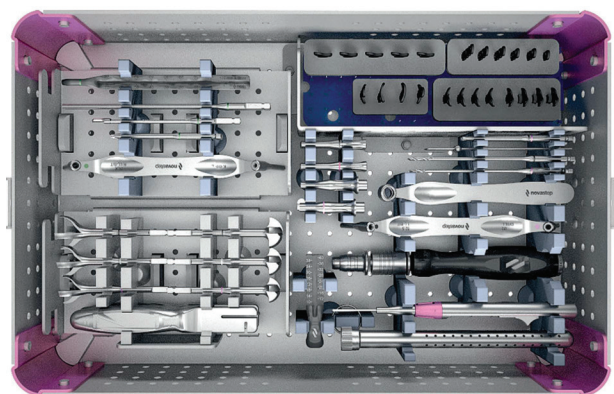
Dedicated instrumentation

Ø4.0mm PECA® Compressive implant can be used: With PECA® set, with the optional addition of a countersink reamer.

PECA® Set



AIRLOCK® Set



Exact-T10 screwdriver tip



Ø3.2mm Drill-bit

Pre-op



Post-op



Distributed by:

Novastep Inc.
930 Sylvan Ave, Suite 125
Englewood Cliffs, NJ 07632
cs@novastep-us.com

CAUTION: Federal (USA) law restricts this device to sale by or on the order of a surgeon.
Rx only

Novastep Inc., or its affiliates, own, use or have applied for the following trademarks or service marks: Peca, Novastep. All other trademarks are trademarks of their respective owners or holders.

© 2022 Novastep

Ref: PEC-BR-Ed1-05-22-EN